



# **NAYE INDIA KI AMAZING**

## **Shine 125**





Experience the comfort, style, and tech with the

***all-new***

# ***Shine*** ***125***

where trust and reliability meet technology.

Make a statement with an all-new cutting-edge Fully Digital Meter and wider rear tyre for better traction.

The OBD2B-compliant engine keeps emissions in check. Conquer city traffic effortlessly with the Idling Stop System empowering with better mileage, while the USB-C port keeps your devices powered up-ensuring nothing slows you down.

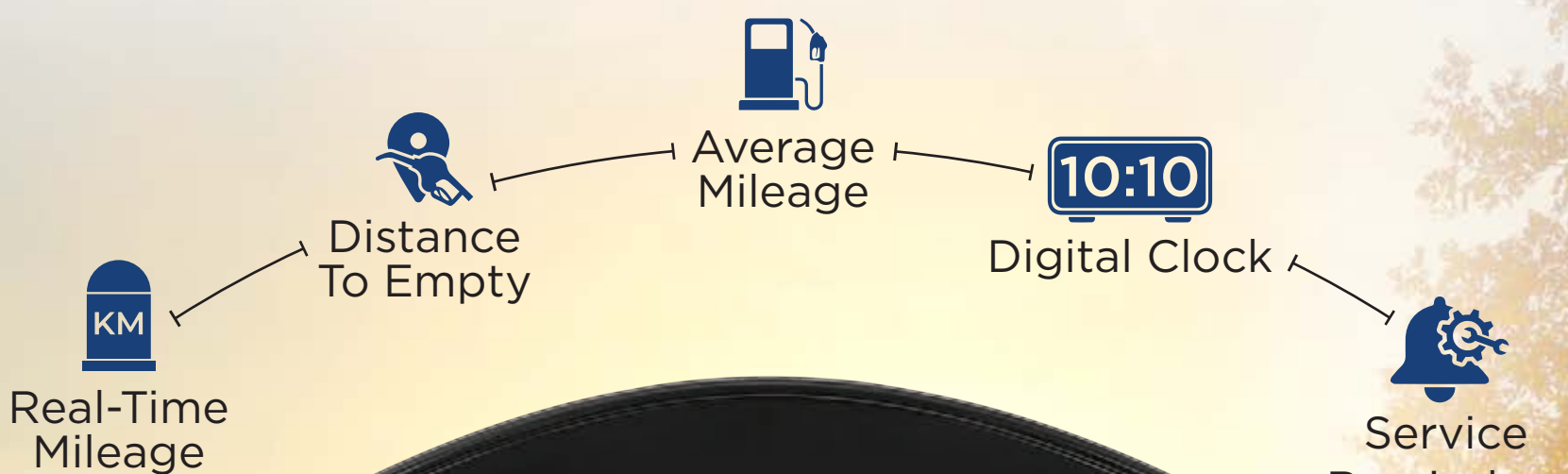




# ***THE NEW AMAZING TECHNOLOGY***

## **New Fully Digital Meter**

A premium Fully Digital Meter engineered for precision and efficiency. It offers real-time and average mileage tracking, range, service reminders, gear position display, digital clock, fuel level monitoring, and an eco-indicator delivering a seamless, data-driven riding experience.

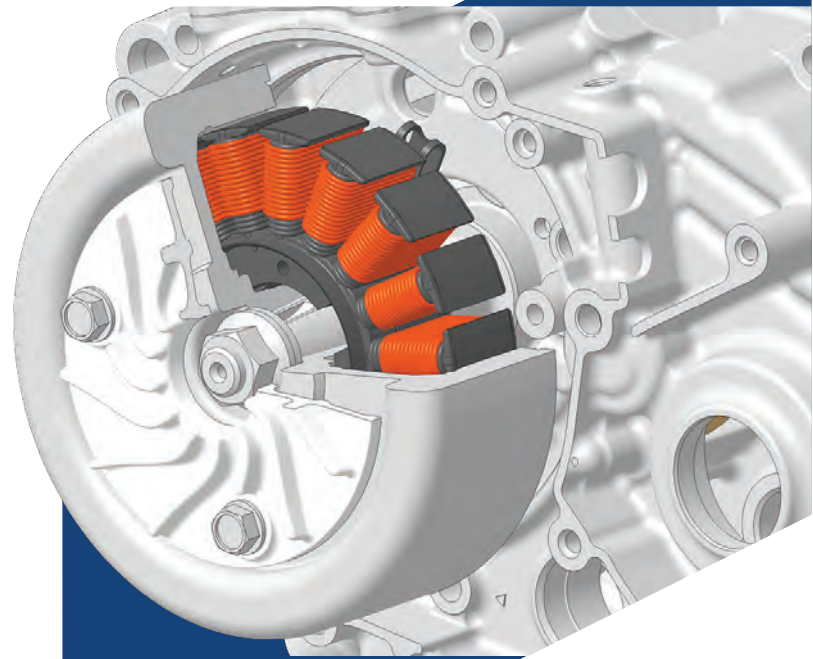






## Idling Stop System

Automatically shuts off the engine during short stops, improving fuel efficiency and making city rides effortless.



## Silent ACG Starter

Honda's advanced ACG starter motor eliminates gear meshing noise, ensuring a seamless start.



## eSP

Honda's Enhanced Smart Power (eSP) technology ensures top-notch performance and fuel efficiency by minimizing friction.





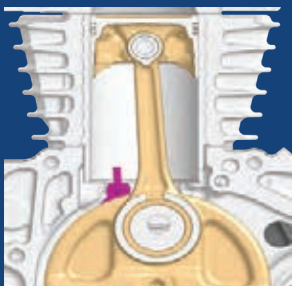
**PGM-FI**  
FUEL INJECTION

## PGM-FI

The cutting-edge Fuel Injection System dynamically adjusts the air-fuel mix for optimized efficiency.

## 125cc BS VI OBD2B compliant engine

A future-ready engine that delivers outstanding performance while being environmentally friendly.



## Friction Reduction

Piston cooling jet, offset cylinder, and rocker roller arm work together to minimize friction and maintain ideal engine temperature.



# ***THE NEW AMAZING COMFORT & CONVENIENCE***



**Honda**

**EXTENDED  
WARRANTY**

**10 YEAR\*  
COVERAGE**

## **3+7 Years Warranty Package**

\*Attractive 10 years warranty package, comprising 3 years standard and 7 years optional service warranty.





## 5-Speed Transmission

Enjoy a smooth yet thrilling ride with the 5-speed transmission.



## 15W USB-C Port

Enjoy your ride. It provides charging to your smartphone, power bank, earphones on the go.



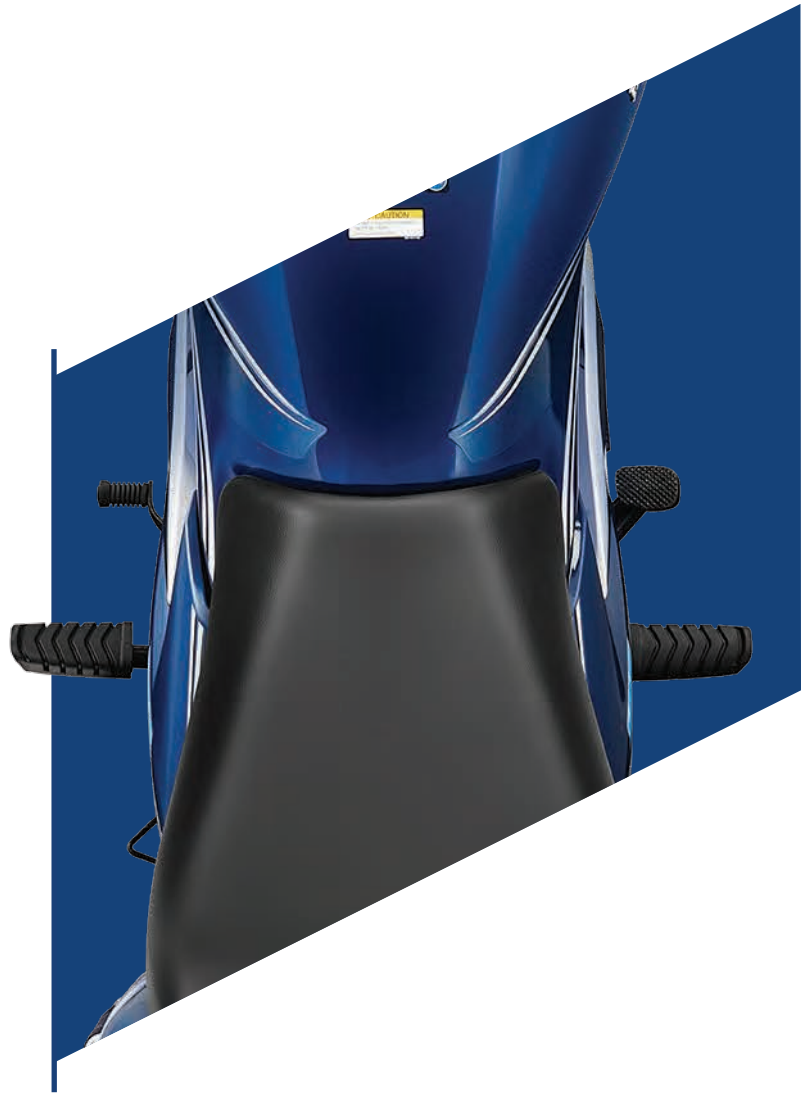
## Integrated Headlamp Beam & Passing Switch

A smart single switch for easy toggling between high/low beam and passing signals.



## Seamless Seat Tank Integration

Optimized seat and tank design enhance comfort and ground reach.



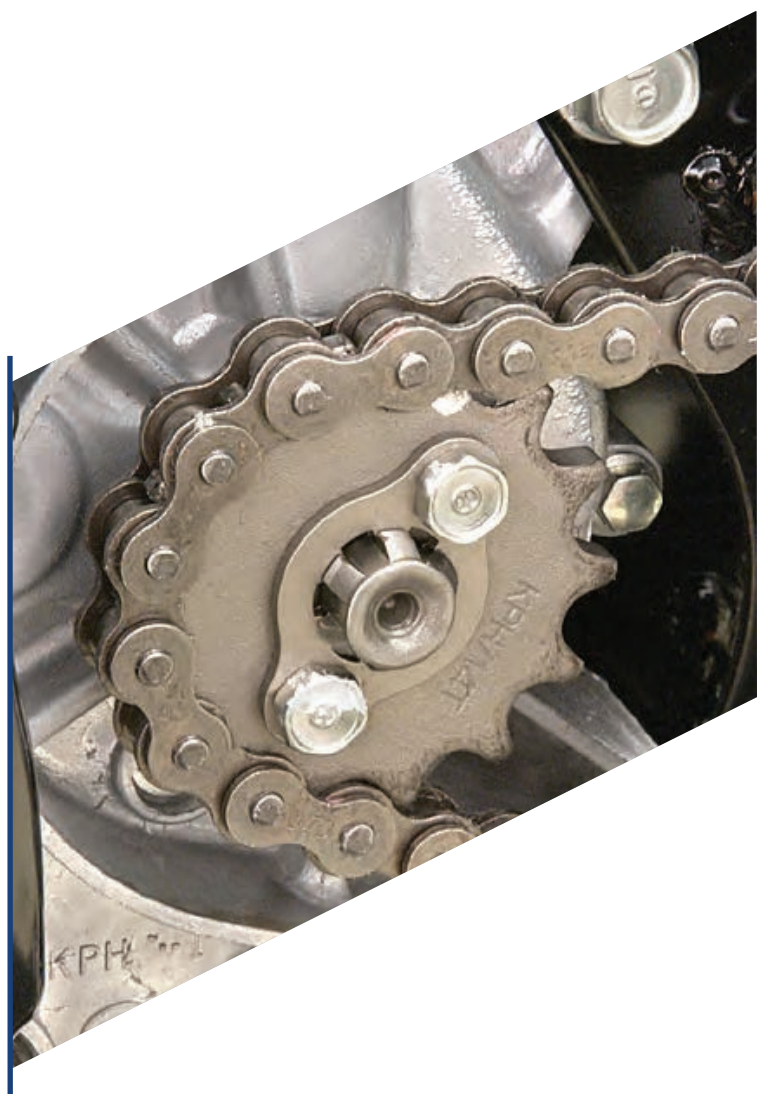
## CBS with Equalizer

The Combi-Brake System shortens braking distance and improves stability.



## Seal Chain

Low-maintenance, highly durable chain for a hassle-free ride.







## High Ground Clearance

162 mm ground clearance allows smooth passage over rough roads and potholes.

## Long Wheelbase

A 1285 mm wheelbase enhances stability, especially at higher speeds.







## New Wider Rear Tyre

A 90 mm rear tyre provides superior grip and control while accelerating or braking.

## Long & Comfortable Seat

A spacious 651 mm seat ensures comfort for both rider and pillion, ideal for long journeys.



## 5Ah MF Battery

High-capacity, maintenance-free battery supports DC headlamps and offers a longer lifespan.



## Side Stand Indicator with Engine Cutoff

Prevents engine start when the side stand is engaged, enhancing safety.



## Viscous Paper Filter

A low-maintenance air filter that requires replacement only every 18,000 km.



# ***THE NEW AMAZING STYLE***







## Stylish Front Chrome Visor

A stylish front visor with chrome garnish adds a striking look.

## Aero-Type Fuel Cap

A sleek fuel cap design adds both style and practicality.



## Elegant Tail Lamp

A signature tail lamp gives the Shine a unique identity.







## Premium Chrome Side Covers

Elegant chrome accents on the side covers enhance the Shine's premium stance.



## Magnificent Graphics

Stylish graphics elevate the bike's dynamic appeal.





## Attractive Chrome Muffler Cover

A chrome-plated exhaust muffler gives an elegant stance, to make Shine stand out in the crowd.



## Trendy Black Alloy Wheels

All-black alloy wheels enhance road presence with a stylish look.







# TECHNICAL SPECIFICATION



## Body Dimensions

|                    |                           |
|--------------------|---------------------------|
| Length             | 2046 mm                   |
| Width              | Drum-728 mm , Disc-741 mm |
| Height             | 1116 mm                   |
| Wheel Base         | 1285 mm                   |
| Ground Clearance   | 162 mm                    |
| Kerb Weight        | 113 kg                    |
| Seat Length        | 651 mm                    |
| Seat Height        | 791 mm                    |
| Fuel Tank Capacity | 10.5 L                    |



## Engine

|                   |                            |
|-------------------|----------------------------|
| Type              | 4 Stroke, SI, BS-VI Engine |
| Displacement      | 123.94 cc                  |
| Max Net Power     | 7.93 kW@ 7500 rpm          |
| Max Net Torque    | 11 N-m @ 6000 rpm          |
| FuelSystem        | PGM-FI                     |
| Bore x Stroke     | 50.00 X 63.121             |
| Compression Ratio | 10.0:1                     |
| Starting Method   | Self/Kick                  |



## Transmission

|              |                       |
|--------------|-----------------------|
| Clutch Type  | Multiplate Wet Clutch |
| No. of Gears | 5                     |



## Tyres & brakes

|                           |                           |
|---------------------------|---------------------------|
| Tyre Size & Type (Front)  | 80/100-18 M/C 47P         |
| Tyre Size & Type (Rear)   | 90/90-18 M/C 51P          |
| Brake Type & Size (Front) | Disc-240 mm , Rear-130 mm |
| Brake Type & Size (Rear)  | Rear-130 mm               |



## Frame & Suspension

|                  |                |
|------------------|----------------|
| Frame Type       | Diamond Type   |
| Front Suspension | Telescopic     |
| Rear Suspension  | Hydraulic type |



## Electricals

|           |                  |
|-----------|------------------|
| Battery   | 12V, 5Ah         |
| Head Lamp | Halogen Bulb, DC |

+The technical specifications and design of the vehicle may vary according to the requirements and conditions without any notice • Shine meets Bharat Stage VI norms • Product shown in the picture may vary from actual product available in the market • Accessories shown in the picture are not part of standard equipment. \*\*Conditions apply.





| FEATURES                                  | DRUM | DISC |
|-------------------------------------------|------|------|
| Fully Digital Meter                       | ✓    | ✓    |
| Eco Indicator                             | ✓    | ✓    |
| Real Time Fuel Efficiency                 | ✓    | ✓    |
| Average Fuel Efficiency                   | ✓    | ✓    |
| Range (Distance To Empty)                 | ✓    | ✓    |
| Trip A and Trip B                         | ✓    | ✓    |
| Service Due Indicator                     | ✓    | ✓    |
| Universal USB-C Type Charging             | OP   | ✓    |
| Idling Stop System                        | ✓    | ✓    |
| Silent Start With ACG                     | ✓    | ✓    |
| Side Stand Engine Cut-off                 | ✓    | ✓    |
| Integrated Headlamp Beam & Passing Switch | ✓    | ✓    |
| 5-Speed Transmission                      | ✓    | ✓    |
| 5-Step Adjustable Rear Suspension         | ✓    | ✓    |
| CBS with Equalizer                        | ✓    | ✓    |
| Seal Chain                                | ✓    | ✓    |
| Wider Rear Tyre                           | ✓    | ✓    |
| More Ground Clearance & Wheelbase         | ✓    | ✓    |
| All Black Trendy Alloy Wheels             | ✓    | ✓    |
| Premium Chrome Muffler Cover              | ✓    | ✓    |
| Premium Chrome Stroke on Side Covers      | ✓    | ✓    |
| Bold Front Chrome Visor                   | ✓    | ✓    |
| Front Disc Brake                          | ✗    | ✓    |

# THE NEW AMAZING COLOURS

Decent Blue  
Metallic



Pearl Siren  
Blue



Geny Gray  
Metallic



Rebel  
Red Metallic



Matte Axis  
Gray Metallic



Pearl Igneous  
Black



***Honda Motorcycle and Scooter India Pvt. Ltd.***

Registered Office: Plot No. 1 , Sector - 03, IMT Manesar, Distt. Gurugram, (Haryana) – 122050, India

**For more details:**

Visit us at: [www.honda2wheelersindia.com](http://www.honda2wheelersindia.com) | Customer Care: [customercare@honda.hmsi.in](mailto:customercare@honda.hmsi.in)

Follow us at :



[honda2wheelers.in](https://www.facebook.com/honda2wheelers.in)



[honda2wheelerin](https://www.instagram.com/honda2wheelerin)



[honda2wheelersin](https://www.youtube.com/honda2wheelersin)



[honda2wheelerin](https://twitter.com/honda2wheelerin)